

MEMBER ALERT



Shipowners Claims Bureau, Inc., Manager
One Battery Park Plaza 31st Fl., New York, NY 10004 USA
Tel: +1 212 847 4500
Fax: +1 212 847 4599

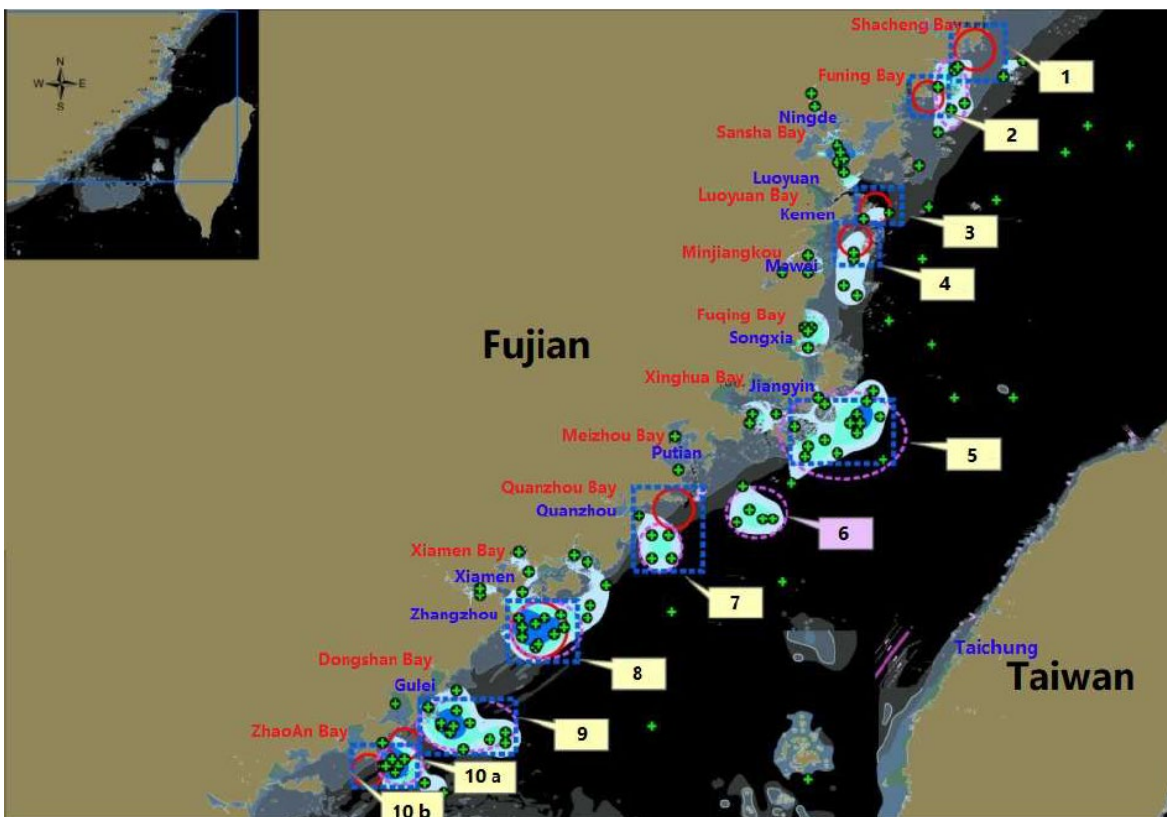
<https://www.american-club.com>

AUGUST 15, 2022

HIGH RISK FOR COLLISION WITH FISHING VESSELS IN FUJIAN WATERS

Reference is made to Member Alert, [End of Fishing Ban in the East China Sea, Bohai Sea and Yellow Sea](#), dated August 12, 2022. Further warnings have been provided by the Fujian Province based Maritime Safety Agency (MSA) and Fujian Ocean and Fisheries Bureau (FOFB) regarding the risks of collision between commercial and fishing vessels in Fujian waters that include the ports of Ningde, Fuzhou, Quanzhou, Xiamen and Zhangzhou.

The Fujian MSA and FOFB have identified ten particular coastal areas as “high risk warning areas” based upon AIS tracking data and the analysis of collisions between commercial ships and fishing vessels over the prior ten years as illustrated in the picture below.



The coordinates for these ‘high risk warning areas’ as shown above are as follows:

MEMBER ALERT



Shipowners Claims Bureau, Inc., Manager
 One Battery Park Plaza 31st Fl., New York, NY 10004 USA
 Tel: +1 212 847 4500
 Fax: +1 212 847 4599

<https://www.american-club.com>

Area No.	Waters	Position	North Latitude	East Longitude
1	Shacheng Baymouth	1	27°02'12.6"	120°23'41.4"
		2	27°02'55.8"	120°22'15.6"
		3	27°08'41.4"	120°28'52.8"
		4	27°07'30.6"	120°31'24.6"
2	Funing Baymouth	1	26°49'21.6"	120°14'55.8"
		2	26°49'39.0"	120°13'30.6"
		3	26°54'59.4"	120°15'22.8"
		4	26°54'42.0"	120°16'49.2"
3	East of Lianjiang	1	26°14'20.4"	119°53'55.2"
		2	26°24'57.6"	120°01'06.6"
		3	26°24'57.6"	120°03'40.8"
		4	26°14'20.4"	119°56'31.8"
4	East of Pingtan	1	25°23'27.0"	119°52'15.0"
		2	25°24'18.6"	119°50'37.2"
		3	25°36'51.6"	119°56'58.8"
		4	25°36'02.4"	119°58'37.2"
5	Southeast of Niushan Island	1	25°14'25.2"	119°52'42.0"
		2	25°16'04.8"	119°49'47.4"
		3	25°27'54.0"	119°58'52.2"
		4	25°26'14.4"	120°01'46.8"
6	Southeast of Nanri Island	1	25°02'40.8"	119°32'25.8"
		2	25°04'51.6"	119°30'49.2"
		3	25°12'34.2"	119°42'15.6"
		4	25°10'24.6"	119°43'50.4"

Area No.	Waters	Position	North Latitude	East Longitude
7	Quanzhou Baymouth	1	24°44'30.0"	118°55'45.0"
		2	24°45'54.6"	118°54'02.4"
		3	24°53'34.8"	119°02'22.2"
		4	24°52'10.2"	119°04'06.0"
8	Xiamen Baymouth	1	24°05'16.2"	118°14'26.4"
		2	24°07'18.6"	118°12'45.6"
		3	24°15'22.2"	118°23'00.0"
		4	24°13'18.0"	118°24'45.0"
9	Futou Baymouth	1	23°43'19.8"	117°43'32.4"
		2	23°44'54.0"	117°43'10.8"
		3	23°53'53.4"	117°54'41.4"
		4	23°52'18.6"	117°56'04.2"
10	Southeast of Dongshan Island	A1	23°35'33.0"	117°33'18.6"
		A2	23°30'45.6"	117°26'07.2"
		A3	23°32'10.2"	117°24'48.0"
		A4	23°36'59.4"	117°32'00.6"
		B1	23°30'01.8"	117°32'42.0"
		B2	23°30'01.8"	117°28'21.0"
		B3	23°34'22.2"	117°34'13.2"
		B4	23°32'23.4"	117°35'58.2"

MEMBER ALERT



Shipowners Claims Bureau, Inc., Manager
One Battery Park Plaza 31st Fl., New York, NY 10004 USA
Tel: +1 212 847 4500
Fax: +1 212 847 4599

<https://www.american-club.com>

Recommendations

- Ensure that vessel crews are familiar with the [Safety Guidelines for Preventing Collision Between Merchant Ships and Fishing Boats in Chinese Coastal Waters](#).
- Review and conduct any relevant safety training related to safety of navigation for fishing areas and collision avoidance procedures fishing vessels.
- Avoid traditional fish farms and fishing areas when voyage planning. Recommended routes should be carefully considered and strictly obeyed during transit through these areas.
- Effective radio communication in fishing areas can be a significant challenge given the number of fishing vessels and language differences. All available means should be considered and applied to warn fishing boats to prevent collisions.
- In the event of a collision with a fishing vessel, rescue operations should be performed immediately taking into account the safety of both vessels, their crews and the surrounding vessel traffic. Vessels should also immediately contact the Fujian MSA or VTS authorities or emergency phone telephone number at +86 12395.

The designation of “high risk warning areas” is subject to change. Your Managers recommend that Members take note of this information and be guided accordingly.

The American Club’s correspondent, Oasis P&I Services, Ltd., are thanked most warmly for their assistance in this matter.