

MEMBER ALERT



Shipowners Claims Bureau, Inc., Manager
One Battery Park Plaza 31st Fl., New York, NY 10004 USA
Tel: +1 212 847 4500
Fax: +1 212 847 4599
<https://www.american-club.com>

DECEMBER 16, 2024

EMERGENCY EXIT SAFETY

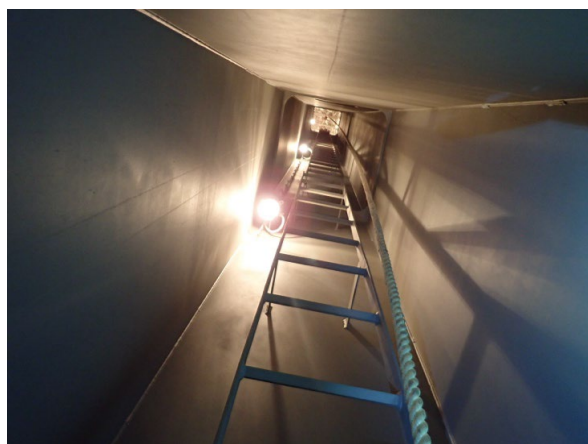
As part of their vessel familiarization training, crew members should learn the locations of all emergency exits on the vessel including the means of escape from the engine room in case of a fire or major incident.

In addition to knowing where they are located, crew members should be familiar with how to exit through each of them, whether through a fire door, escape scuttle, vertical ladder, inclined ladder, or a combination of them. Beyond the initial vessel familiarization training, periodic training and practice are the best ways to remain prepared to use emergency exits.

Vertical ladders require extra caution. In an emergency, crew members will be inclined to move quickly, but they also need to move carefully so that they don't fall and exacerbate the danger to which they are exposed. Footwear with worn treads increases the risk of falling from a vertical ladder. Similarly, wearing gloves also increases the risk of falling, especially if the gloves fit loosely or are dirty. Further, three points of contact should always be maintained during egress to reduce the risk of falling.



When these means of escape are used, the crew members may be wearing Emergency Escape Breathing Devices (EEBDs), Self-Contained Breathing Devices (SCBAs), or other protective clothing that could reduce their field of view, partially restrict their movement, or snag on something. Periodic training should also include practice using the emergency exits while wearing this equipment.



Means of escape require maintenance to ensure ladders are in good condition, shielding is in good condition, and fire doors and escape scuttles operate freely and properly. Emergency lighting and signage should also be checked and maintained regularly. While doing maintenance, all applicable "working from height" safety requirements and work permits must be closely followed, particularly for emergency escapes for engine rooms due to their vertical height. It is recommended that safety harnesses be worn and properly secured

for all work with a risk of falling 2 meters (6 feet) or more.

MEMBER ALERT



Shipowners Claims Bureau, Inc., Manager
One Battery Park Plaza 31st Fl., New York, NY 10004 USA
Tel: +1 212 847 4500
Fax: +1 212 847 4599
<https://www.american-club.com>

Your Managers recommend that Members take note of this information and be guided accordingly. The photos are courtesy of Independent Maritime Consulting, LLC.

